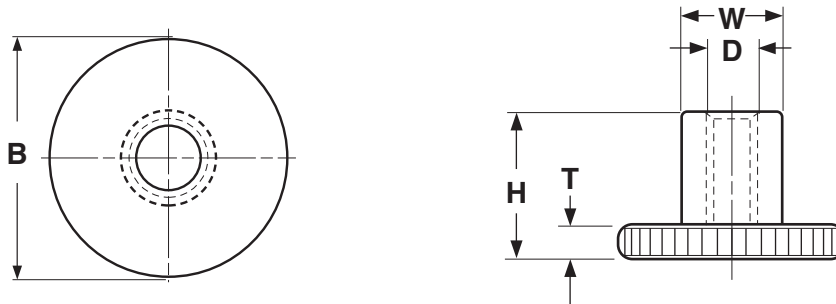


**DIN 466 Knurled Nuts,
High Type**

NUTS



DIN 466 KNURLED NUTS, HIGH TYPE				
Nominal Diameter	B	H	T	W
	Diameter of Knurled Section	Total Height	Knurled Section Thickness	Cylinder Outside Diameter
	Ref	Ref	Ref	Ref
M3	12	7.5	2.5	6
M4	16	9.5	3.5	8
M5	20	11.5	4	10
M6	24	15	5	12
M8	30	18	6	16
M10	36	23	8	20

Description	Internally threaded barrel-shaped fasteners integrally formed with a pancake-shaped top, which has a knurled edge to facilitate manual tightening and loosening.
Applications/ Advantages	Designed to be easily tightened and loosened by hand.
Material	A2 & A4 Stainless Steel
Plating	Stainless knurled nuts are typically supplied without any additional finish.